

norma
AUDIO ELECTRONICS
意大利音樂聯盟



MADE IN ITALY

PRODUCT COLLECTION

REVO IPA-70B

REVO IPA-140

REVO DS-1, CDP-1BR, DAC-1

REVO PA-150, PA-160MR

REVO SC-2

HS DA1

www.normaudio.com

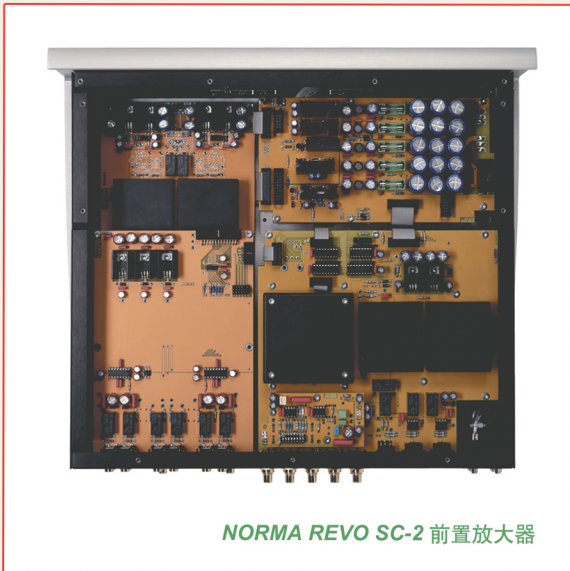


Technical Specifications:

- 输入：4组RCA非平衡，2组XLR平衡
- 输入阻抗：10K欧姆
- 输出：1组RCA非平衡，1组XLR平衡
- 输出阻抗：220欧姆
- 尺寸：125mm高 X 430mm宽 X 430mm深
- 重量：15 Kg

Technical Specifications:

- 输入：1组RCA非平衡，1组XLR平衡
- 输入阻抗：47K欧姆
- 输出端口：2对 (PA-150)，1对 (PA-160MR)
- 功率输出：(PA-150) 150W RMS/8欧，300W RMS/4欧
(PA-160MR) 160W RMS/8欧，320W RMS/4欧
- 尺寸：125mm高 X 430mm宽 X 430mm深
- 重量：25 Kg/pc

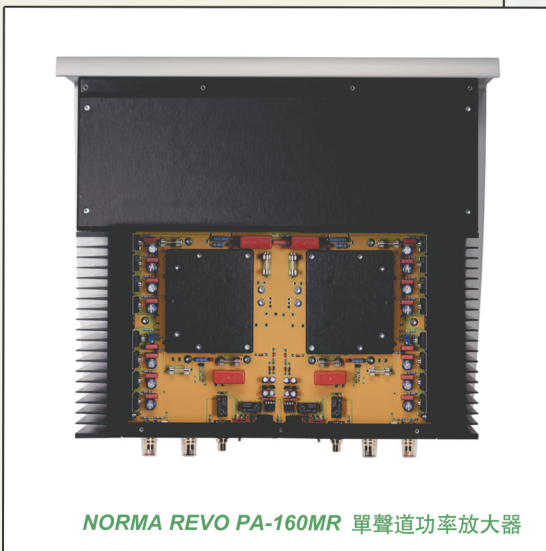


NORMA REVO SC-2 前置放大器



High filtering capacity (70.000 uF) with numerous (24) low impedance capacitors.

NORMA REVO PA-150 功率放大器电源组件



NORMA REVO PA-160MR 单声道功率放大器

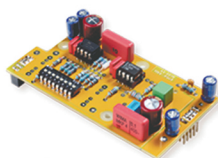


Uday Reddy, SoundStage! Hi-Fi

升级选配组件

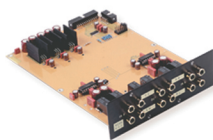


全能遥控器



Phone Option

唱头放大卡



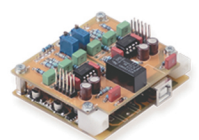
Multi-channel Option

多声道卡



2-level Construction

SC-2 LN 输入/输出模组



Option USB board

24/192 解码卡

NORMA REVO IPA-70B



Technical Specifications:

- 输入: 4组RCA非平衡, 1组(AV)Direct
- 输入阻抗: 10K欧姆
- 功率输出: 70W RMS/8欧, 140W RMS/4欧
- 尺寸: 75mm高 X 430mm宽 X 350mm深
- 重量: 15 Kg

NORMA REVO IPA-140USB



Technical Specifications:

- 输入: 4组RCA非平衡, 1组XLR平衡, 1组(AV)Direct
- 输入阻抗: 10K欧姆
- 功率输出: 140W RMS/8欧, 280W RMS/4欧
- 尺寸: 125mm高 X 430mm宽 X 430mm深
- 重量: 25 Kg

NORMA REVO DS-1, CDP-1BR, DAC-1



Technical Specifications:

- 数码升频: Burr-Brown PCM1704 True-Multibit 24Bit 双24比特PCM 44.1KHz-192.0KHz数模转换
- 时钟纠正: +/-2ppm typ. at 25°, +/-10ppm at 60°
- 输出: RCA (非平衡), XLR (平衡)
- 输出电平: 3.0 V RMS RCA, 6.0 V RMS XLR
- 尺寸: 90mm高 X 430mm宽 X 350mm深
- 重量: 10 Kg

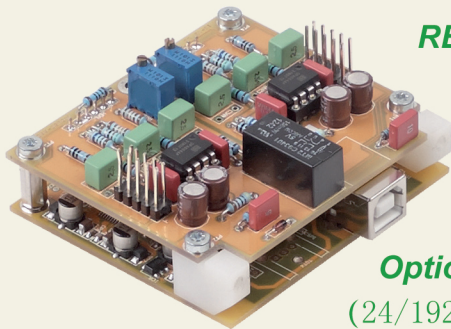
NORMA HS DA1



Technical Specifications:

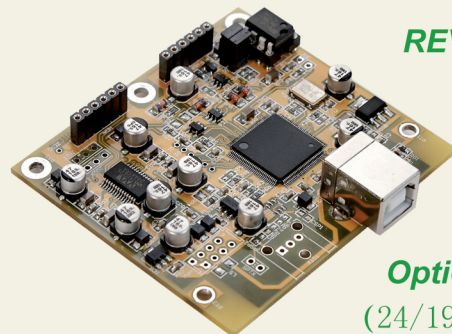
- 数码升频: Burr-Brown PCM1704 True-Multibit 24Bit 双24比特PCM 44.1KHz-192.0KHz数模转换
- 时钟纠正: +/-2ppm typ. at 25°, +/-10ppm at 60°
- 输入: USB, 2x SPDIF RCA, AES/EBU, TOSLINK OPTICAL
- 输出: 3V RMS RCA (非平衡) 6V RMS XLR (平衡)
- 尺寸: 126mm高 X 215mm宽 X 350mm深
- 重量: 5 Kg

Optional Features: (升级选配组件)



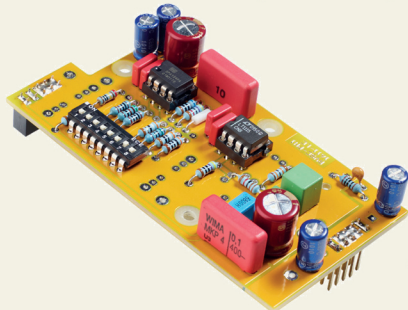
REVO IPA-140
专用模组

Optional USB
(24/192, DSD解码)

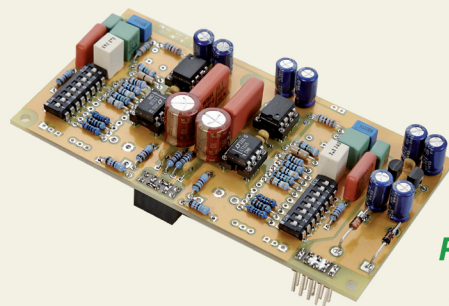


REVO IPA-70B
专用模组

Optional USB
(24/192, DSD解码)



Phone Optional
(唱头放大模组)



Phone Optional
(唱头放大模组)

- High Resolution USB input, 24/192, DSD compatible.
- High Quality dual mono phono stage, for MM and MC pick-up
- Optional Remote, machined from a full block of aluminium, controls all Norma products.



Norma is based in Cremona, Italy.

The city and its surroundings are well known all over the world for being home to great composers as Monteverdi and Ponchielli, and to famous violin makers such as Stradivari, Amati, Guarneri and many others. As of today, more than 100 violin makers' shops are found in the ancient roads of the city. In this inspiring context, where music permeates everything, for more than 20 years Norma has been involved in the study and implementation of sophisticated audio amplifiers, where technical skills and musical sensitivity must be merged together, in the same way the best musical instruments are made.

The result of this endeavor is a unique sound, which represents a synthesis of parameters usually set one against each other: dynamics, speed, and absolute transparency are combined with extraordinary musicality and total lack of listening fatigue.

The struggle between solid state and valves is finally overcome, as is the concept of reproduction.

Norma brings the listener to an intimate relation with the original event.

n o r m a
A U D I O E L E C T R O N I C S

意大利音樂聯盟



君庭影音工程有限公司

香港上環文咸東街50號寶恒商業中心15樓1504室

電話: (+852) 21533372

傳真: (+852) 3159 8467

電郵: info@granding.com.hk